



EXTREME ENVIRONMENTS  
EXTREMELY RELIABLE



# COMPACT WEATHER STATION

## Valuable Weather Data Collected Locally At The Most Critical Time

Improve operational and disaster response time with quality, real-time, localized environmental data. This compact weather station can be fitted with the required sensor to collect crucial information to support prompt, intelligent decision making. Easily program the Compact Weather Station with FTS360.



	PARAMETER	RANGE	RESOLUTION	ACCURACY
INCLUDED	Wind Speed	0.1 m/s to 60 m/s	0.01 m/s	±3% to 40 m/s ±5% to 60 m/s
	Wind Direction	0-359°	1°	±3° to 40 m/s ±5° to 60 m/s
	Temperature	-40°C to +70°C	0.1°C	±0.3°C @ 20°C
	Humidity	0 to 100% RH	1% RH	±2% @ 20°C (10% to 90% RH)
	Dew Point	-40°C to +70°C	0.1°C	±0.3°C @ 20°C
	Pressure	300 to 1100 hPa	0.1 hPa	± 0.5 hPa @ 25°C
OPTIONAL	Precipitation	0 to >300 mm/hr	0.08 mm (customizable)	3% repeatability
	Fuel Moisture for Vegetation Management	-40°C to +60°C 0 to 100% RH	0.1°C 1% RH	± 1.2°C @ 25°C ± 2% (0 to 100% RH)
	Solar Radiation	0 to 1600 W/m <sup>2</sup>	1 W/m <sup>2</sup>	

### WHAT'S INCLUDED

- All-In-One Weather Sensor
- Solar Power System
- On-Site Data Storage
- Mounting Hardware
- GOES or Cellular Telemetry

### OPTIONS

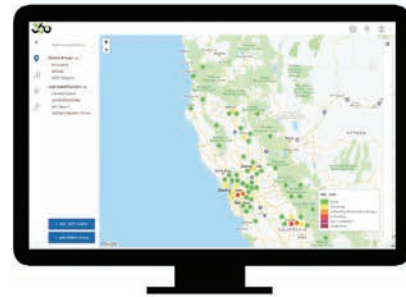
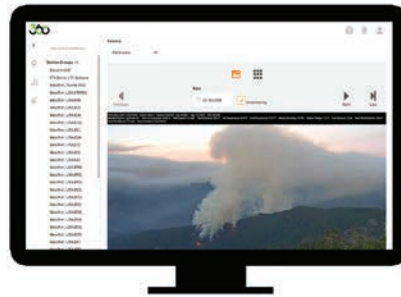
- AC Power Adapter
- Air Quality Monitoring
- Road Weather



# Complete Situational Awareness

**FTS360** is a secure and reliable cloud-based platform that allows you to view sensor and station data, camera images and video. Take advantage of user programmable advanced calculations, intelligent alerting, and full configuration capabilities no matter where you are.

- Connectivity from edge to cloud has been secured with encryption and user authentication
- Create alerts and actions within your network so it reacts automatically and intelligently
- PTZ camera control
- Optional value-add layers such as Lightning and Air Quality Index
- Direct API integration with 3rd party analysis packages



## SYSTEM SPECIFICATIONS

DATA LOGGER	
Temperature Range	-40°C to +65°C (-40°F to 149°F)
Humidity	0-95% RH (Conformal coated circuitry)
Local Control	Bluetooth Low Energy (BLE)
Local Data Storage	4GB (User accessible SD card)
Certifications	CE, FCC, IC
Telemetry Options	Cellular (Verizon, AT&T, Global) GOES
Weight	0.682kg (1.5lbs)
ENCLOSURE	
Dimensions	(10"D x 16"H x 16"W)
IP Rating	66
Material	0.125" Aluminum
Weight	12.5kg (27.5lbs)
POWER	
Solar Panel	20W, 2.26kg (5.0lbs)
Battery	44Ahr SLA, 13.5kg (29.7lbs)

## CUSTOMER SUPPORT

### TECHNICAL SUPPORT

All FTS products are backed by our extensive documentation, phone and email technical support.

### INSTALLATION AND MAINTENANCE PROGRAMS

FTS offers several installation and maintenance programs designed to minimize your effort, downtime and make maintenance easier and simpler.

### ANNUAL ONSITE MAINTENANCE

A comprehensive maintenance program for your entire system that includes an annual visit by an FTS-trained technician, annual sensor exchange, field validation and calibration, full record-keeping, priority emergency support and more.



**CANADA** 1065 Henry Eng Place | Victoria, BC | V9B 6B2  
**USA** 1124 Fir Avenue, Suite C | Blaine, WA | 98230  
 ftsinc.com | 1.800.548.4264



Rev. 03-05-2021

**EXTREME ENVIRONMENTS  
EXTREMELY RELIABLE**