



## Water Quality Enclosure

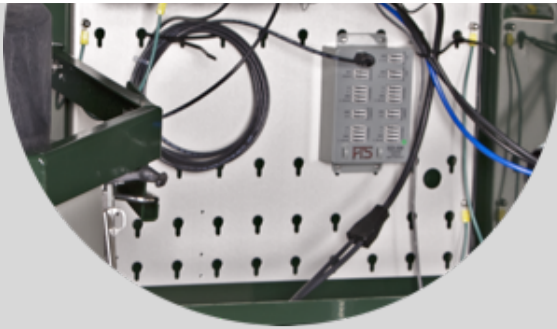
The FTS water quality enclosure is designed specifically for water quality stations utilizing an ISCO water autosampler, like our [SedEvent](#) event-driven, automatic grab sampling system. The enclosure simplifies changing auto-sampler bottles in the field, provides a roomy, ready-to-go, weather-proof system for mounting equipment, and offers a practical security solution where vandalism poses a problem.

- Internal grounding cables protect internal electronics.
- Can be ordered with legs or mounted on your own base (ideally mounted approx. 34" above ground).
- Approximate Dimensions: 4' Wide, 3' Tall, 2' Deep (~1.2m x .9m x .6m)
- Approximate empty weight: 80 lbs (~36Kgs)



Sampler lid lift system raises the top of the sampler and locks it into place, providing one-handed access to sample bottles. Both the autosampler drawer and the lid lift are compatible with full size and compact ISCO autosamplers.





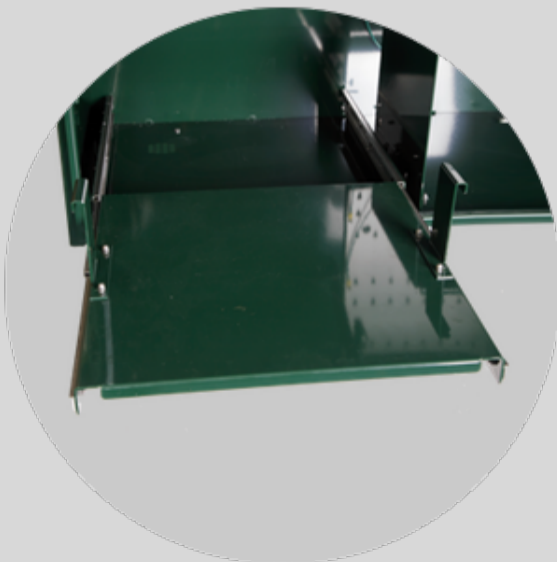
Back wall-mounted aluminum key-way plate facilitates quick yet secure mounting of system components like [dataloggers](#).



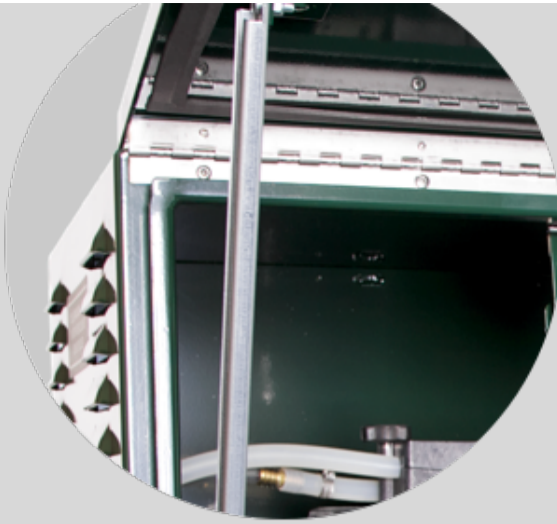
The welded 1/8" heavy-gauge, marine grade, powder-coated aluminum shell and stainless steel, lockable latches protect equipment from mother nature and vandals.



Durable ABS cableways are mounted on the left and right side of the enclosure.



Unique drawer allows sampler base to effortlessly slide out on ball bearings for convenient access to sample bottles.



Rain canopy door swings up and locks open keeping you dry during operation and maintenance. Integrated drip rail keeps water out of the interior.

## Technical Specifications

<b>Dimensions:</b>	120 cm x 90 cm x 60 cm (48" x 36" x 24")
<b>Construction:</b>	1/8th inch, heavy gauge, marine-grade aluminum
<b>Weight:</b>	36 kg (80 lb.)